

SHARP®

PRO SERIES COLOR DOCUMENT SYSTEMS ●●●●●



MX-6500N MX-7500N

The new Sharp Pro Series Color Document Systems deliver breakthrough performance and unmatched versatility.

SUPERIOR IMAGE QUALITY WITH PRODUCTIVE FEATURES

versatility

The MX-6500N and MX-7500N high performance color document systems offer exceptional productivity, professional features and world-class image quality at speeds up to 75 ppm. Designed for busy in-plant and on-demand workflow environments, these new models combine a versatile, modular design with a wide range of supported media and powerful output capabilities that can help your business produce more jobs in-house and improve profitability.

Key Features

- Edge-to-edge printing enables operators to output high quality, full-bleed booklets in-line, helping to reduce outsourcing costs as well as production time.
- A powerful external Fiery® Color Print Server with Command WorkStation® is available for color critical environments that need precision job management. Command WorkStation is fully integrated with the Sharp touch-screen for unmatched control and ease-of-use.
- Sharp's exclusive triple air-feed paper handling option provides higher reliability for maximum uptime as well as enhanced media support, and is virtually maintenance free.

The MX-6500N and MX-7500N also support Sharp OSA® technology, which makes integration with network applications and cloud services simple and easy. Sharp's industry-leading security platform incorporates standard 256-bit data encryption and overwrite protection to help safeguard your business's intellectual property. And when it comes time to trade in, a convenient End-of-Lease feature can erase all job data and user data.



ENGINEERED TO MAXIMIZE OUTPUT EFFICIENCY



FULL-BLEED
EDGE-TO-EDGE PRINTING

AVAILABLE FIERY COLOR
PRINT SERVER

TRIPLE AIR-FEED PAPER
HANDLING OPTION

An advanced design plus multi-function capability allow you to meet tomorrow's document needs today.

- Flexible modular design provides a **wide variety of configurations** from basic high-speed copying and printing to professional folding and **booklet making**
- 150-sheet **Duplex Single Pass Feeder (DSPF)** scans documents at up to 150 images per minute
- Up to **13,500-sheet paper capacity** supports media **up to 110 lb. cover stock (300 gsm)** and up to 13" x 19" output
- **On-board paper catalog** stores up to 1,000 media profiles to help streamline job set-up and maintain optimum output quality
- Sharp's **Color Consistency System** with next generation image process control delivers high-quality color output and maintains optimum color balance and toner density page after page
- Standard PCL®6 and **true Adobe® PostScript®3™** with available Windows® XPS printing systems
- **Large 15.4"** (diagonally measured) high-resolution **color touch-screen display** with integrated keyboard

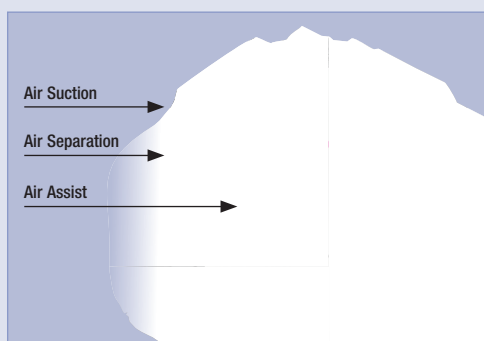


MX-7500N shown with Fiery Command WorkStation fully integrated at the Sharp control panel.

- True **1200 x 1200 dpi** printing with 8-bit processing provides beautiful images and enhanced clarity for fine details such as small text and graphics
- Standard **Job Management** features make it easy to print on-demand as well as retain jobs, combine jobs, repaginate jobs, edit pages and more
- **Energy efficient** belt fusing offers **low power consumption**, fast warm up time, enhanced print quality and greater media capabilities
- Supports Sharp's award-winning security platform with standard **256-bit data encryption** and up to 7 times **data overwrite protection**
- Convenient **End-of-Lease feature** can erase all files on the hard disk drive, all user data, job status data and address book data at trade-in time



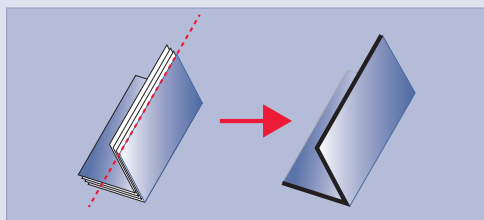
PROFESSIONAL FEATURES THAT ENHANCE PRODUCTIVITY



Triple air-feed LCT paper trays maximize reliability and minimize downtime. Pneumatic sensors maintain consistent air flow.



Produce high quality full-bleed color booklets up to 80 pages with the MX-FN22 Saddle Stitch Finisher, or up to 120 pages with the Plockmatic Booklet Maker System.

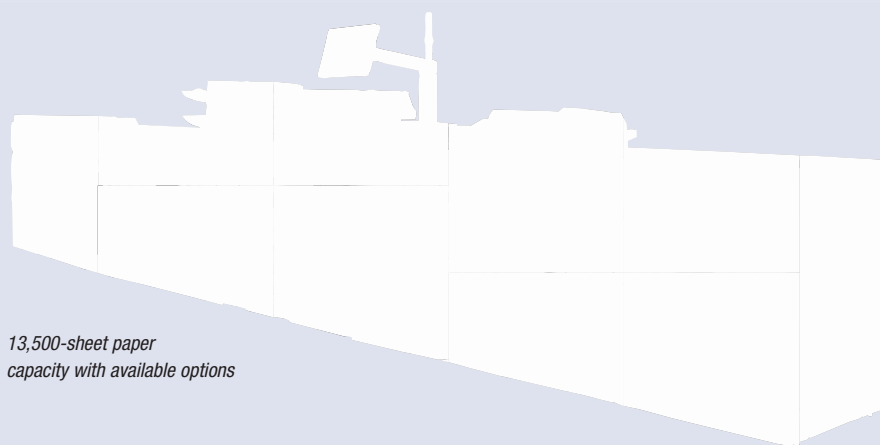


The MX-TM10 Trimmer Unit option for the MX-FN22 Saddle Stitch Finisher can cut the folded open edge for a smooth, straight, finished look.

Production class paper handling, full-bleed printing, with versatile in-line finishing – the MX-6500N/7500N capabilities will exceed your expectations.

High Performance Paper Handling with Air-feed Technology

Sharp understands the importance of productivity, that's why the new MX-6500N and MX-7500N Pro Series Color Document Systems offer up to **13,500-sheet paper capacity** and support **media types up to 110 lb. cover (300 gsm), even when duplexing!** Sharp's advanced large capacity paper tray option uses air-feed technology, which minimizes downtime. A feature typically found on printing presses, the triple air-feed system directs air flow with precision accuracy to ensure proper paper handling. A standard dual head document feeder can scan up to **150 images per minute**.



13,500-sheet paper capacity with available options

Print full-bleed High Quality Color Booklets In-line

With the MX-6500N/7500N innovative **edge-to-edge printing** feature, operators can produce compelling **full-bleed color booklets** up to 80 pages. Sharp makes it easy with the available MX-FN22 Saddle Stitch Finisher and MX-TM10 Trimmer Unit. For even more productivity, choose the Plockmatic Booklet Maker System, which can **produce up to 120-page saddle-stitch or square fold spin® booklets**. Help reduce outsourcing costs as well as production time by producing high quality full-bleed booklets in-house.

MX-FN22 Saddle
Stitch Finisher





OUTSTANDING COLOR QUALITY – HIGH PERFORMANCE OUTPUT

With the available MX-PE10 Fiery Color Print Server, the Sharp Pro Series Color Document System becomes a powerful integrated solution for managing professional in-plant and busy on-demand printing environments.

- Easily manage jobs with Fiery® Command WorkStation® fully integrated at the Sharp control panel for unmatched control and ease of use
- Deliver high impact documents with vibrant color fidelity that maintains consistent results page after page
- Process large, complex jobs at speeds up to 75 ppm that will exceed your expectations

Better Productivity with Higher Performance

The powerful architecture of the MX-PE10 Fiery Server **shortens turnaround times**, while helping companies produce professional-looking finished jobs that win them new business and get their customers noticed.

Outstanding Color Across Applications

In demanding environments, achieving accurate color every time is critical. The integrated Fiery color management tools provide **superior color control** out of the box. Customers who routinely use transparencies, and other effects such as drop shadows, can rest assured that their designs will be printed correctly.

Centralized Control and Automated Management

The MX-PE10 Fiery Server offers a **centralized solution** that features the award winning Command WorkStation®. Its interactive WYSIWYG interface enables operators to monitor, control and troubleshoot production from multiple desktops or locally at the Fiery Server directly from the Sharp Pro Series touch-screen.

Industry-Leading Production Print and Variable Data Tools

The MX-PE10 Fiery Server offers optional make-ready tools and driver-based imposition with Booklet Maker, to efficiently handle many production processes. It enables customers to **produce short-run jobs profitably** by automating manual tasks, and increases workflow flexibility by supporting industry-leading variable data printing (VDP) formats including PPML and the new PDF/VT-1 and 2 formats.

Integration with Third Party and Other EFI Solutions

The MX-PE10 Fiery Server uses the Adobe PDF Print Engine (APPE) v2.5 rendering technology to offer a native end-to-end PDF workflow. The Fiery open platform also supports industry standards and **seamlessly integrates with existing MIS environments**, third-party vendors and other EFI MIS solutions.



MX-7500N shown with Fiery Command WorkStation fully integrated at the Sharp control panel.



The MX-PE10 Fiery Server installation includes a touch pad for the Sharp Pro Series Document Systems.



A HIGH PERFORMANCE DOCUMENT SYSTEM

Flexibility

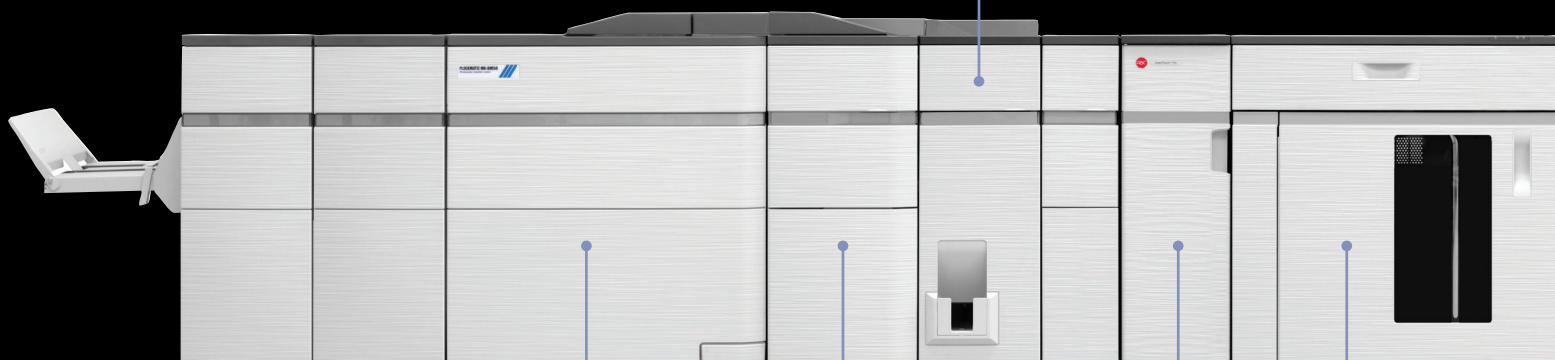
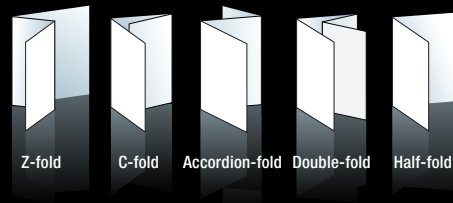
The MX-6500N and MX-7500N Pro Series Color Document Systems utilize a powerful multi-processor controller designed to quickly execute complex print and copy jobs in busy production environments at speeds up to 65ppm and 75ppm respectively.

High Quality Professional Output

Produce brilliant color documents as well as compelling black and white documents with crisp razor-sharp graphics. True 1200 x 1200 dpi resolution with 8-bit processing helps ensure all your documents will look great.

Multi-Folding Unit

Provides a variety of folds, including Z-fold, C-fold, Accordion fold, Double fold and Half fold.



Plockmatic Production Booklet Maker System

Produces 120-page full-bleed, square-fold spine booklets in-line at engine speed.

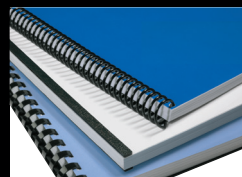


Versatile Finishing Options

Two powerful finishing systems are available – a 4,000-sheet stacking finisher with 100-sheet stapling capacity or a 4,000-sheet saddle-stitch finisher, which can produce up to 80-page full-bleed booklets with the available face trimmer unit.

GBC® SmartPunch Pro™

Professional punching system produces up to seven commonly used punch styles for creating professional bound booklets.

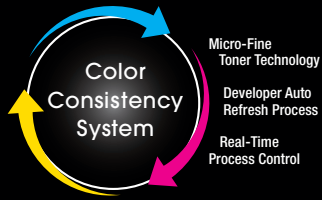


5,000-Sheet Stacker

For high volume post process jobs add the 5,000-sheet stacker with standard paper cart. Connect two stackers in tandem (as shown) for unattended output of up to 10,000 sheets.



HIGH IMPACT VERSATILITY AND SCALABILITY



Color Consistency System

Sharp's Color Consistency System combines Micro-fine Toner Technology with advanced Developer Refresh Technology and next generation Image Process Control. This synergy of processes helps ensure color output is at peak performance page-after-page and job-after-job.

Convenient Job Management

1TB hard disk drive provides on-board document storage. An intuitive thumbnail view makes it easy to select, edit, reprint, repaginate and more.

Post Sheet Inserter

Produce professional looking documents with pre-printed covers and chapter inserts with the available post sheet inserter.

Integrated Network Scanning

Sharp's ImageSEND™ feature provides one-touch document distribution. Scans to multiple destinations, including E-mail, FTP, Network Folder (SMB and Home Directory) and USB.

Duplexing Single Pass Feeder (DSPF)

Standard 150-sheet dual head document feeder scans both sides of a document in a single pass at up to 150 images per minute (IPM). This system helps maximize both efficiency and reliability.

15.4" (diagonally measured) Touch-screen

A large, high resolution touch-screen with tablet-style navigation makes it easy to access features. You can also add shortcut keys to popular features, change the key layout or add a custom background theme.

500-Sheet Multi-Bypass

Feeds paper sizes from 5-1/2" x 8-1/2" to 13" x 19".

Independent Motors

Insulated independent motors run quieter and provide higher reliability.

3,000-Sheet Standard Paper Capacity

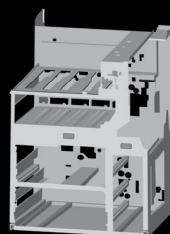
Includes 2,000-sheet letter size tandem tray and two 500-sheet letter/legal/ledger size trays. Add optional paper handling accessories for a maximum on-line paper capacity of 13,500 sheets.

Rigid Frame Construction

Offers increased durability and reliability to withstand heavy use.

Superior Media Handling

Sharp's advanced 5,000-sheet large capacity paper tray option utilizes triple air-feed technology, which directs air flow with precision accuracy for proper paper handling and enhanced media support up to 300 gsm. Two large capacity trays can be connected in tandem (as shown).



CONFIGURATIONS TO SUIT VIRTUALLY ANY ENVIRONMENT

Versatile and Customizable To Fit Your Needs

The MX-6500N/7500N Pro Series Color Document Systems offer flexible paper handling and finishing options to accommodate any size in-plant or on-demand workflow environment.*



MX-7500N shown with 3,500-sheet large capacity cassette, 100-sheet Staple/Saddle Finisher and 100-sheet bypass tray.



MX-7500N shown with Curl Correction Unit, Inserter, Multi-Folding Unit, GBC SmartPunch Pro, 100-sheet Staple/Saddle Stitch Finisher, dual 5,000-sheet large capacity trays, dual 5,000-sheet paper stackers, 500-sheet multi-bypass tray and status indicator.

Modular Options Make It Easy To Build the System of Your Choice

Options for the MX-6500N/7500N enable businesses to choose from several high performance finishing systems that offer up to 100-sheet stapling, professional saddle stitch booklet making and three-hole punching. More advanced configurations include a square-fold spine Booklet Making System, a professional punching system, high capacity paper stackers, a two-tray inserter, a multi-folding unit and a trimmer unit.

customize



Multi-Folding Unit

Two-Tray Inserter

MX-6500N/7500N Base Machine

3,500-Sheet Letter LCC

3,000-Sheet Ledger LCC



Plockmatic 120-page Production Booklet Maker System



100-Sheet Staple Saddle Finisher



100-Sheet Staple Stacking Finisher



GBC Smart Punch Pro™



5,000-Sheet Paper Stacker



5,000-Sheet LCT Air-Feed



500-Sheet Multi-Bypass

*Some options not available in all configurations, see your local dealer.

GET MORE OUT OF NETWORK RESOURCES

Streamline your document workflow and enhance productivity with Sharp OSA technology.

Integrating with Network Applications and Cloud Services Has Never Been So Easy

With standard Application Communication and External Accounting modules, the MX-6500N/7500N color series offers **powerful document workflow capabilities** to help businesses leverage their network infrastructure, cloud-enabled services and more.* While others are limited to a small circle of productivity, the Sharp OSA development platform allows businesses to leverage the power of their network applications, back-end systems, even cloud-enabled services, right from the touch-screen panel of this new series.

Save Time, Increase Efficiency

You'll save time and increase the efficiency of everyday tasks with Sharp OSA technology because it can be virtually seamless to the user. Any MX-6500N/7500N anywhere in the organization can display choices that were once only available on a desktop PC. With **one-touch access** to business applications via Sharp OSA integration, you can start and finish a document distribution task without worry.

** Some features require optional equipment.*

Customized Integration

Sharp OSA technology also provides **powerful customization**. With the ability to personalize applications and processes specific to your business, Sharp OSA technology can help eliminate redundancy and **streamline workflow**, helping to save time and **optimize productivity**. The latest version of Sharp OSA technology can reach beyond the firewall, enabling cloud-based applications over the Internet. And since Sharp OSA technology utilizes industry-standard network protocols and web APIs, third party software developers can deliver customized solutions to your business faster than ever.

The Convenience You Want with the Security You Need

The MX-6500N/7500N color series with the Sharp OSA development platform is the logical choice for providing fast, **flexible access to documents and applications**...no matter where you are in the office.

You also get the controlled access and tracking ability you require with tighter integration capabilities for network security and accounting applications.



ADVANCED DEVICE MANAGEMENT TOOLS MAXIMIZE EFFICIENCY

The MX-6500N/7500N Pro Series Color Document Systems enhance operational efficiency through versatile device management.

*Sharp Remote Device Manager (SRDM)**

Make management of your MX-6500N/7500N simple and straightforward with Sharp Remote Device Manager (SRDM). This easy-to-use software allows you to take control of the versatile system features and simplifies installation and management.

- With **Printer Status Monitor**, network users can view printer conditions, check paper levels, toner, and more, all through an easy-to-use interface.
- With Sharp Remote Device Manager, administrators can easily manage the setup, configuration, device settings and more. Advanced features such as **Remote Front Panel** allow administrators and support personnel to view and control the LCD panel of the machine remotely from virtually any PC on the network. Plus, with event-driven service alerts, administrators and supervisors can achieve higher productivity. Now it is easier than ever to view click counts, history reports and more.
- Experience the convenience of an **Embedded Web Page** right from your desktop. This advanced web-based management tool allows users to create and manage their own network scanning destinations, profiles and web-links. Administrators can access device settings, color control, account information and security settings.

Take Charge of Color Usage and Costs

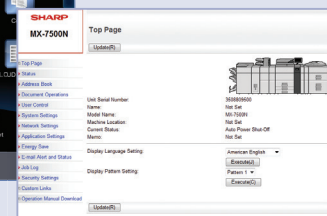
With Sharp's device management system, administrators and supervisors can **define user groups** on the MX-6500N/7500N to manage and restrict features, such as color copying, scanning or printing. Easily set up a custom user group to manage page counts (copy, print, scan or fax operations) for both color and B&W. This helps to simplify cost management of color imaging. The MX-6500N/7500N can store profiles for up to 1,000 users.

24/7 Training with My Sharp™

Managing all of the advanced features of your Sharp product is simple and easy. Ask your Authorized Sharp Dealer about the **My Sharp** website. This dedicated customer training website is customized to your MX-6500N/7500N and allows you to locate resources and find information specific to your configuration, truly helping you maximize your investment.



Remote Front Panel



Embedded Web Page

** Not available at time of launch.*

SAFEGUARD YOUR INTELLECTUAL PROPERTY

PRIVACY

AUTHORIZATION

CONFIDENTIALITY

PROTECTION



Sharp's Standard Key Security Features at a Glance

- 256-Bit Data Encryption
- Up to 7 times Data Overwrite Protection
- Group Account Management for up to 1,000 Users
- Confidential Printing
- Port Management
- IP/MAC Address Filtering

Innovative document and device protection helps ensure confidentiality.

To help protect your data, the MX-6500N/7500N offers several layers of **Standard Security**, making Sharp the optimum choice to help protect employees' privacy and intellectual property. As a leader in office equipment security, Sharp makes it easy for virtually any business or government entity to safely deploy digital copying, printing, scanning and faxing.

Authority Groups

Advanced **Account Management** enables administrators to set authority groups for access to features of the MX-6500N/7500N. Administrators can control which department, for instance, has full access to copying, printing and/or scanning. Walk-up users enter a code, Local Name and Password, or LDAP User Authentication to access the features assigned to their group.

Data Encryption and Overwrite

To help protect your data, the MX-6500N/7500N can encrypt document data using AES (Advanced Encryption Standard) **256-bit encryption**. The MX-6500N/7500N can also erase the temporary memory on the hard drive by overwriting the encrypted data up to seven times, offering an unprecedented level of assurance. A convenient **End-of-Lease feature** overwrites all data, including the Document Filing area, user data, job status data and address book.

Network Scanning Access Control

To help protect your network from unauthorized e-mail communications, the MX-6500N/7500N supports **User Authentication**, requiring users to login before performing any network scanning operations.

Control Device Access Over the Network

To help restrict access to the device over the network, the MX-6500N/7500N offers IPsec, SMB and extended support for **SSL Encryption** (Secure Sockets Layer), **IP/MAC** address filtering, IEEE 802.1x authentication, protocol enable/disable and port management for maximum security.

Documents Remain Confidential

The MX-6500N/7500N offers **Confidential Printing**, which when used, requires users to enter a PIN code in order to print a queued document. To help protect your direct-print documents from unauthorized viewing, the MX-6500N/7500N offers encrypted PDF printing and scanning.

Tracking and Auditing Information

Legislation and industry policies require companies to be more aware of information flow from their offices. Sharp offers both built-in and additional hardware/software which allows users to **control, access and track usage** of each device on the network.

Data Security Kit (Optional)

For maximum protection, the optional data security kit offers additional features, such as **Data Overwrite on-demand** and at power up, Document Filing access control, **Incorrect Password Lockout** and Restricted Status Display and Restricted List printing.

These scalable security offerings aim to protect your intellectual property, preserve confidential information and help your business to meet regulatory requirements, such as the Health Insurance Portability and Accountability Act (HIPAA) and the Gramm-Leach-Bliley Act (GLB). For additional information visit: www.sharppusa.com/security.



COMMITTED TO HELPING PROTECT THE ENVIRONMENT

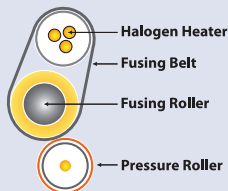


Advanced Energy Saving Features

The MX-6500N/7500N utilizes several energy efficient technologies to minimize power consumption and maximize energy savings.

- An LED exposure lamp reduces power significantly when compared to conventional exposure lamps.
- A customizable seven-day power management scheduler allows businesses to define the days and times when power will be turned on and turned off.
- Sharp's Auto Power Management function allows the device to be set to shut off automatically based on usage trends.
- Sharp's Eco-Scan mode can shut off the fuser when scanning documents, previewing images, faxing and other operations.

State-of-the-art belt fusing system consumes less power and shortens warm up time.



Sharp's environmental initiatives and dedication to developing energy efficient document systems set a high standard for the industry.

An Environmentally Responsible Approach to Product Design

The MX-6500N/7500N Pro Series Color Document Systems utilize Sharp's advanced **micro-fine toner technology**, which offers a lower consumption rate and produces less waste than conventional toners, resulting in longer replacement intervals. Sharp supplies are packaged using fully **recyclable materials**. Long-life consumable parts help minimize service intervals and downtime, resulting in lower operating costs. With two different energy saving modes, power can be reduced or shut off at set intervals. All Sharp document systems are **ENERGY STAR® qualified** and **RoHS compliant** to restrict the use of hazardous substances.

Toner Recycling Program

As part of our commitment to helping preserve the environment, Sharp offers our customers zero-waste-to-landfill recycling for all Sharp consumables, including cartridges, bottles, toner collection containers and drum units. Sharp encourages customers to recycle their used Sharp toner cartridges in bulk by providing a pre-paid Recycling Kit for their return to our facility.

Environmental Leadership

As a testament to our commitment to the environment, Sharp is a multi-year winner of the **ENERGY STAR®** annual **Excellence in Energy Proficiency Product Design**. Sharp is also a multi-year winner of the **SmartWaysm Excellence Award**, which recognizes companies for conserving energy and lowering greenhouse gas emissions in logistics and transportation. Sharp was also a previous recipient of the **Excellence in Partnership Green Contractor Award** and the **Evergreen Award** from the General Services Administration (GSA) and the Coalition for Government Procurement. These awards recognize environmentally responsible businesses and their efforts on recycling, waste reduction and affirmative procurement practices.

Global Initiatives

Sharp is committed to environmental sustainability and corporate responsibility including planning, design, manufacturing, distribution and product end-of-life management. For more information about Sharp's environmental leadership including information about energy efficient products, electronics or toner cartridge recycling, please visit www.sharppusa.com/environment.

MX-6500N/7500N SPECIFICATIONS

Main Specifications			
MX-6500N/ MX-7500N	Base models include, 150-sheet DSPF, 3,000-sheet paper capacity, 1-TB hard disk drive, PCL6/Adobe® PostScript® 3™ network printing, color network scanning, web browser and swing-out keyboard. Includes Application Communication Module and External Accounting Module.		
Type	Light production, color multi-function digital document system		
Display	15.4" (diagonally measured) color dot matrix high-resolution touch panel tilting display. 1280 x 800 dots (WXGA)		
Functions	Copy, print, network print, network scan and document filing¹		
Copy System	Dry electrostatic transfer/Dual component developer/Magnetic brush development/OPC/Belt fusing/white LED exposure		
Original Size	Max. 11" x 17" sheets and bound documents		
Copy Size	Min. 5½" x 8½" (paper), Max. 13" x 19" (paper)		
Printable Area	Max. 13" x 19"		
Copy Speed	65/75 ppm B&W/Color (8½" x 11")		
Multiple Copy	Max. 9999 copies		
First Copy Time (in Seconds)²	MX-6500N		MX-7500N
	B&W	Color	B&W Color
	Platen Glass	4.0 5.6	3.7 5.1
	DSPF	6.5 9.2	6.3 8.8
Warm Up Time	90 seconds²		
Magnification	25% to 400% in 1% increments (with DSPF 25%-200%)		
Original Feed	150-sheet DSPF		
Scan Speed	DSPF Scan: Up to 150 IPM² (Monochrome); Up to 150 IPM² (Color)		
Original Sizes	5½ x 8½", 8½" x 11", 8½" x 11" R, 8½" x 14", 11" x 17"		
Paper Capacity	Std. 3,000 sheets/max. 13,500 sheets		
Paper Feed	Standard: Tandem Tray 1 - 1200 sheets (letter size), Tandem Tray 2 - 800 sheets (letter size), Trays 3/4 - 500 sheets ea. (letter/legal/ledger/statement/12" x 18"). Optional: Bypass Tray (for machine) - 100 sheets (letter/legal/ ledger/statement/ envelope/12" x 18", 13" x 19"), Bypass (for LCT) - 500 sheets (letter/legal/ ledger/statement/12" x 18", 13" x 19"), LCT (2-Drawer) - 2,500-sheets each drawer (letter/legal/ledger/ 12" x 18", 13" x 19"), Letter LCC - 3,500 sheets (letter), Ledger LCC: 3,000 sheets (letter/legal/ ledger, 12" x 18", 13" x 19").		
Paper Weights and Types	Tandem Trays - 16-28 lb. bond (60-105 gsm), Trays 3/4 - 16 lb. bond to 100 lb. bristol (60-220 gsm), Multi-bypass Tray (for machine) - 15 lb. bond to 110 lb. cover (55-300 gsm), Multi-bypass Tray (for LCT) - 15 lb. bond to 100 lb. bristol (55-220 gsm), LCT (2-drawer) - 15 lb. bond to 110 lb. cover (55-300 gsm), Letter/Ledger LCC - 16 lb. bond to 100 bristol (60-220 gsm). Includes thin, plain, recycled, color, letter head, pre-printed and pre-punched, embossed and glossy paper.		
Duplexing	Standard automatic duplex copying and printing, supports up to 110 lb. cover (300 gsm)		
CPU	Multi-Processor Controller		
Interface	RJ-45 Ethernet (10/100/1000Base-T), USB 2.0 (2 host ports, front and rear), USB 2.0 (1 device port)		
Memory	Standard 5 GB		
Hard Disk Drive	1 TB		
Copy Resolution	B&W: 1200 x 1200 dpi (max.), Color: 600 x 600 dpi (max.)		
Color Modes	Photo, Full Color Mode, Monochrome (B/W)		
Exposure Control	Modes: Text, Text/Photo, Text/Printed-Photo, Printed-Photo, Photo, Map, Pale-Color . Settings: Auto or 9 step manual		
Halftone	256 gradations/2 levels (monochrome)		
Copy Features	Electronic sort, Auto Color Sensing, Auto Paper Selection, Auto Magnification Selection (AMS), image preview/edit, auto tray switching, rotate copy, reserve copy, tandem copy, book copy, margin shift, edge/center erase, book divide, dual page, cover/ insert page, OHP insert, job build, card shot, blank page skip, mirror/reverse, proof, watermark, custom image, job programs.		
Account Control	Up to 1000 users. Supports user-number authentication (on device), login name/password or login name/password (via LDAP server) for Copy, Print, Scan, Fax and document management.		
Output Capacity	Main output tray (top) 250 sheets (face down)		
Firmware Management	Flash ROM (USB), network update capability and 1 to N update with SRDM (Sharp Remote Device Management)		
Configuration	Web-based management with user/administrator level login, cloning (1 to N) with SRDM and remote front panel access		
Method	Remote front panel, access to service logs and click counts		
Service/Functions	Tilt Front Panel, Adjustment of Key Touch-Send and Speed,		
Accessibility	Document Feeder Free Stop, Job Programs, Remote Front Panel, Universal Grip for Paper Trays, and Disable Screen Timeout		
Features	International Energy Star Program Ver. 1.2, Law on Promoting Green Purchasing, European RoHS		
Pwr. Source	AC 208-240 VAC, 60 Hz, 20 Amps		
Pwr. Consumption	Maximum: 2880w or less		
Weight	MX-6500N/7500N: Approx. 490 lbs.		
Dimensions	Approx. 33 1/4" (w) x 33 1/4" (d) x 48" (h)		

Network Printing System (Standard)	
PDL	Standard PCL® 6 compatible Adobe®, PostScript® 3™, optional XPS
Resolution	1200 x 1200 dpi/8-bit processing
Print Speed	65/75 pages per minute (8½" x 11")
Print Drivers	Windows Server® 2003-2008, Windows XP, Windows XP x64, Windows Server 2003-2008 x64, Windows Vista®, Windows Vista® x64, Windows 7, Windows 7 x64, Windows 8, Windows 8 x64, MAC OSX (including 10.4, 10.5, 10.6, 10.7), all MAC PPD.
Features	Auto configuration, continuous printing, edge to edge printing, electronic sorting, N-up printing, duplex printing, transparency inserts, margin shift, image rotation, different cover page, poster print, job bypass print, job retention, confidential print, proof print, user authentication, image stamp and watermarks. Additional features: Multiple pamphlet print, network tandem print, carbon copy print mode, different cover page/last page/ other page, form overlay, tab paper settings, tab printing, chapter inserts and page Interleave¹
Direct Printing	File Types: TIFF, JPEG, PCL, PRN, TXT, PDF, Encrypted PDF, PostScript and Windows XPS¹ (FTP, Web page, E-mail and USB)
Resident Fonts	80 outline fonts (PCL), 136 fonts (PS)
Interface	RJ-45 Ethernet 10/100/1000 Base-T, USB 2.0
Operating Systems	Windows Server 2003-2012, Windows XP, Windows Vista, Windows 7, Windows 8, MAC OS X10.4, X10.5, X10.6, X10.7, X10.8, Novell® Netware® Unix®, Linux® and Citrix® (XenApp 5.0 6.0, 6.5) and Windows Terminal Services, SAP device types.¹
Network Protocols	TCP/IP (IPv4, IPv6, IPSEC), SSL (HTTP, IPP, FTP), SNMPv3, SMTP, POP3, LDAP, 802.1x for Windows and Unix. LPD and LPR for Unix. IPX/SPX® for Novell environments. EtherTalk®, AppleTalk® for Macintosh® environments.¹
Printing Protocols	LPR, IPP, IPPS, PAP, Raw TCP (port 9100), FTP and Novell Pserver/Rprinter
Network Security	IP/MAC address filtering, protocol filtering, port management, user authentication and document administration.¹
Security Stds.	IEEE-2600™-2008, DoD (NSTISSP) #11, CAC/PIV access control¹

Network Scanning System (Standard)	
Scan Modes	Standard: Color, monochrome, grayscale
Original Size	11" x 17" (Max.)
Resolution	600 dpi
Output Modes	600 dpi, 400 dpi, 300 dpi, 200 dpi, 150 dpi, 100 dpi
Image Formats	Monochrome: TIFF, PDF, PDF/A, Encrypted PDF, Compact PDF, XPS; Color: Grayscale, Color TIFF, JPEG, PDF, Encrypted PDF, XPS
Image Compression	Monochrome Scanning: Uncompressed, G3 (MH), G4 (MR/MMR)
Scan Dest.	Color/Grayscale: JPEG (high, middle, low), Compact PDF
One-touch Dest.	E-mail, FTP, Folder (SMB), USB
Group Dest.	Up to 2000 (combined scan destinations)
Programs	Up to 500
Max. Jobs	48 (combined)
Protocols	Up to 100
Network Security	TCP/IP and SSL (includes HTTP, SMTP, LDAP, FTP, POP3), SMB, ESMTP and 802.1x.
Network Security	E-mail server user authentication for LDAP and Active Directory

Fiery Color Print Server (Option)	
Server Type	External Server
System Software	Fiery FS100 Pro
CPU Type	Intel® Core® i5-2400
CPU Speed	3.1 GHz
Memory	4 GB RAM
Hard Disk Drive	1 TB
Operating System	Windows 7 Professional for Embedded Systems x32/x64
Network Conn.	RJ45 10/100/1000 Base-T
Pwr. Source	100-240 VAC, 50/60 Hz, 6A
Pwr. Consumption	125w (Typical)/350w (Max.)
Dimensions	Approx. 8 1/2" (w) x 14" (d) x 19 1/4" (h)
Weight	Approx. 43 lbs.
Options	Fiery Color Profiler Suite, Fiery Graphic Arts Package Premium Edition, Fiery JobMaster™, Fiery Impose, Fiery Compose, Fiery JobFlow™, Fiery Impose-Compose, Fiery JobMaster-Impose, EFI ES-2000 Spectrophotometer, Fiery Central, Removable Hard Disk and FACI Kit (Fiery Integrated Workstation)

Inserter (Option)	
Paper Capacity	Upper Tray: 200 sheets; Lower Tray: 200 sheets (20 lb. bond)
Paper Weight	16 lb. bond to 100 lb. Bristol (Paper feeding)
Paper Size	Up to 13" x 19"
Power Cons.	70w or Less
Power Source	24 Volts (Supplied by Main Unit)
Dimensions	21 1/2" (w) x 30" (d) x 50 1/2" (h)
Weight	Approx. 51 lbs.

4K 100-Sheet Stapler/Finisher (Option)	
Type	4,000-sheet console stapler finisher (100-sheet stapling)
Output Trays	Upper tray: Moving offset tray (up to 1,500 letter size sheets) Middle tray: 250 sheets (letter size, non-stapled) Lower tray: Moving offset tray (up to 2,450 letter size sheets)
Staple Capacity	Up to 100 sheets (letter/statement)
Staple Media	Plain paper, letter/legal/ledger size or mixed
Staple Positions	1 front, 1 rear, or 2 point stitching
Pwr. Source	120 VAC, 60 Hz, 15 Amps
Pwr. Consumption	200w/350w with MX-FD10
Weight	Approx.: 134.5 lbs.
Dimensions	Approx.: 30 3/4" (w) x 30" (d) x 41" (h) (with tray extended)

4K 100-Sheet Stapler/Saddle Stitch Finisher (Option)	
Type	4,000-sheet console saddle-stitch finisher (100-sheet stapling)
Output Trays	Upper tray: Moving offset tray (up to 1,500 letter size sheets) Middle tray: 250 sheets (letter size, non-stapled) Lower tray: Moving offset tray (up to 2450 letter size sheets)
Staple Capacity	Up to 100 sheets (letter/statement)
Staple Media	Plain paper, letter/legal/ledger size or mixed
Staple Positions	1 front, 1 rear, or 2 point stitching
Saddle Stitch	Center stitch/center fold (2 staples) letter/legal/ledger sizes
Saddle Stitch	Up to 5 sets (16-20 sheets)/10 sets (11-15 sheets per set)/15 sets (6-10 sheets per set)/25 sets (1-5 sheets per set)
Max. Sets	
Pwr. Source	120 VAC, 60 Hz, 15 Amps
Pwr. Consumption	200w/350w with MX-FD10
Weight	Approx.: 134.5 lbs.
Dimensions	Approx.: 30 3/4" (w) x 30" (d) x 41" (h) (with tray extended)

Optional Equipment	
MX-LC12	3,500-sheet Large Capacity Cassette (letter)¹
MX-LC13	5,000-sheet Large Capacity 2-Drawer Air-Feed Tray (ledger)¹
MX-LCX3N	3,000-sheet Large Capacity Cassette (ledger)¹
MX-MF10	100-sheet Multi-bypass Tray (for machine)
MX-MF11	500-sheet Multi-bypass Tray (for MX-LC13)
MX-LT10	Long Paper Feeding Tray (requires MX-MF10)
MX-FN21	4K Stacking 100-sheet Staple Finisher¹
MX-FN22	4K Stacking 100-sheet Staple/Saddle Stitch Finisher¹
MX-CF11	2-Tray Inserter Unit¹
MX-FD10	Multi-folding Unit¹
MX-ST10	5,000-sheet Stacker (includes paper cart)
MX-CA10	Paper Cart (additional)
MX-RB12	Paper Pass Unit (for machine)
MX-RB13	Relay Unit¹
MX-RB14	Paper Pass Unit (for MX-LC13)
MX-RB15	Curl Correction Unit¹
MX-RB17	Large Capacity Tray Tandem Connecting Kit
MX-TM10	Trimmer Unit¹
MX-PN13B	3-Hole Punch Unit (for MX-FN21/FN22)
MX-SCX1	Staple Cartridge (for MX-FN22)
MX-SCX2	Staple Cartridge (for MX-FN21/FN22)
MX-TR14	Right Side Exit Tray
MX-TU14	Center Exit Tray
AR-SU1	Stamp Unit (requires AR-SV1 Stamp Cartridge)
AR-SV1	Stamp Cartridge (required for AR-SU1)
MX-PF10	Bar Code Font Kit
MX-PUX1	XPS Expansion Kit
MX-EB11	Compact PDF Kit
MX-PE10	Fiery Color Print Server
MX-PX10	Fiery Interface Kit
MX-EB15	HDD Mirroring Expansion Kit
MX-EC50	CAC Reader (requires Data Security Kit)
MX-BM50	Plockmatic Booklet Maker
MX-GBCK2	GBC SmartPunch Pro
MX-FR43U	Commercial Data Security Kit (not available at time of launch)
MX-AMX1	Application Integration Module
MX-SL10N	Status Indicator
OVENDPS	Generic Vend Interface Kit

Supplies	
MX-62NTBA	Black Toner Cartridge
MX-75NTCA	Cyan Toner Cartridge
MX-75NTMA	Magenta Toner Cartridge
MX-75NTYA	Yellow Toner Cartridge
MX-62NVBA	Black Developer
MX-62NVSA	Cyan/Magenta/Yellow Developer
MX-62NRSA	Drum
MX-700HB	Toner Collection Container

¹ Some features may require optional equipment.
² Specification may vary depending on product configuration, machine settings and operating conditions.



SHARP ELECTRONICS CORPORATION
Sharp Plaza, Mahwah, NJ 07495-1163
1-800-BE-SHARP • www.sharppusa.com

Design and specifications subject to change without notice. Sharp, Sharp OSA and all related trademarks are trademarks or registered trademarks of Sharp Corporation and/or its affiliated companies. Windows, Windows Server and Windows Vista are trademarks or registered trademarks of Microsoft Corporation. EFI, Fiery, Electronics For Imaging, the Fiery logo, the EFI logo, FreeForm, Spot-On, WebTools and Command WorkStation are trademarks or registered trademarks of Electronics For Imaging, Inc. All other trademarks are the property of their respective owner.

